

1st Quarter Princeville Condo Report

Sold Properties | January 2016 - April 2016

Condo Complex	BD/BA	Sqft Living Area	Days on Market	Listed Price	Sold Price
ALII KAI 7104	2/2	886	2	\$469,000	\$455,000
ALII KAI 6101	2/2	1,088	260	\$649,900	\$595,000
ALII KAI 5203	2/2	1,085	1	\$595,000	\$575,000
CLIFFS 6301	2/2	1,186	69	\$595,000	\$550,000
CLIFFS 7203	4/4	1,864	296	\$670,000	\$640,000
HALE MOI 107	1/2	1,033	227	\$425,000	\$400,000
HANAIEI BAY VILLAS 5	2/2.5	1,244	67	\$620,000	\$590,000
NIHILANI 32B	2/2.5	1,406	917	\$539,000	\$525,000
NIHILANI 23C	3/3	1,972	132	\$629,000	\$604,000
PALI KE KUA 217C	2/2	1,127	78	\$1,200,000	\$1,075,000
PLANTATION 212	2/2	1,153	450	\$479,000	\$470,000
PLANTATION 1021	3/3	1,318	7	\$634,500	\$615,000
MAUNA KAI 4A	2/2	1,503	15	\$385,000	\$366,000
MAUNA KAI 9A	2/2	1,503	53	\$399,000	\$370,000
MAUNA KAI F8	2/2	1,280	239	\$410,000	\$397,500
PUAMANA 12A	2/2	1,298	300	\$485,000	\$456,000
PUAMANA 14B	2/2	1,298	45	\$575,000	\$570,000
SANDPIPER 227	2/2.5	1,173	19	\$410,000	\$395,000
SANDPIPER 107	2/2	1,042	37	\$360,000	\$345,000
SANDPIPER 216	3/2.5	1,173	3	\$385,000	\$400,000
VILLAS OF KAMALII 50	3/3	1,825	192	\$729,000	\$715,000

162

Avg Days On Market

95%

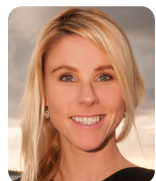
Sold Price VS Last List Price

\$11,108,500

Sales Volume

Active Listings

Condo Complex	# Active	Active Units	BD/BA Range	Sqft Liv Range	Price Range
ALII KAI	7	1101, 2201, 3102, 6103, 9D, 11B, 14D	2/2	1,020 - 1088	\$355K - \$659K
CLIFFS	8	1305, 2109, 3303, 7201, 8203, 8204, 8306, 9302	1/2 - 4/4	917 - 1,864	\$329.9K - \$849.9K
EMMALANI COURT	5	110, 314, 412, 415, 525	2/2 - 3/2.5	1,192 - 1,726	\$549K - \$1.295M
HALE MOI	1	110	2	1,033	\$350,000
HANAIEI BAY RESORT	4	9104/5/6, 5303/4, 1513/14, 2305/6	1/2 - 3/3	867 - 1,705	\$419K - \$1.499M
HANAIEI BAY VILLAS	1	34	2/2.5	1,244	\$775,000
NIHILANI	4	8B, 22B, 28A, 32C	2/2 - 2/3	1,406 - 1,972	\$625K - \$675K
PALI KE KUA	11	108A, 109A, 202C, 216C, 119, 12, 13, 143, 233, 236, 237	1/1 - 2/2	717 - 1,135	\$350K - \$1.2M
PALIULI	1	5	2/2	1,337	\$599,900
PLANTATION	3	912, 1422, 1611	2/2 - 3/3	1,153 - 1,318	\$525K - \$639K
MAUNA KAI	2	6A, 6B	2/2	1,498 - 1,503	\$439K - \$449K
PUAMANA	5	4B, 5B, 11A, 17D, 22A	2/2	1,214 - 1298	\$320K - \$495K
PUU POA	3	301, 302, 401	2/2	1,359 - 1,734	\$1.375M - \$1.895M
VILLAS OF KAMALII	2	54, 59	3/3	1,766 - 1,767	\$639K - \$749.9K



For real estate information please contact:

LAUREN PINGREE

REALTOR SALESPERSON • RS-76803

808.212.8058 | LaurenPingree@HawaiiLife.com | LaurenPingree.com



HawaiiLife.com
LIC# RB-19928

This information has been supplied by Hawaii Information Service, Kauai's MLS. All information is deemed accurate as of 04/03/2016. If your home is currently listed for sale, please disregard this announcement. It is not our intent to solicit another Realtor's business.